

HERMANN PARK  
CONSERVANCY

2010 ANNUAL REPORT

Hermann Park  
Conservancy is a  
citizens' organization  
dedicated to the  
stewardship and  
improvement of  
Hermann Park —  
today and for  
generations  
to come.





# LETTER FROM THE CHAIR

Hermann Park is an amazingly beautiful Houston landmark. Thanks to your support, the Park is able to provide millions of visitors lasting memories of tranquility and beauty—as well as arts and entertainment—today, and for generations to come.

Named “best place to people-watch” by the *Houston Press*, Hermann Park is recognized as a public space unlike any other in our city. Lake Plaza, open for its first full year in the spring, has been incredibly well received and has earned numerous awards for its community impact. This year, the Conservancy was excited to partner with the Texan French Alliance for the Arts, sponsor of the celebrated exhibition of works by internationally-acclaimed artist Bernard Venet in Hermann Park.

To successfully continue the Conservancy’s mission, especially during trying financial times, we know that we need to ensure financial stability, to safeguard the appearance and maintenance of the Park, and to develop an organization that strives to make Hermann Park a natural oasis in the middle of Houston.

Specific accomplishments achieved during fiscal year 2010 (July 2009 through June 2010) include:

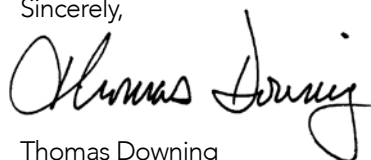
**Financially** The Conservancy and its friends have helped grow support for major projects including the Grand Gateway and the Garden Center through continued grants and successful fundraising. Because of this hard work, the Conservancy has brought these Park improvements much closer to reality.

**Physically** Several strides have been made in the physical planning of major centennial efforts. Thanks to the Conservancy’s public partners, the first phase of the master signage plan is now in place with directional and informational signs situated throughout the Park. We will also soon expand the pedestrian trail by reclaiming 10.5 acres of park land by pairing North and South MacGregor roads.

**Organizationally** Hermann Park Conservancy is more prepared than ever to achieve its goals effectively and efficiently through a cohesive staffing structure, a growing volunteer program, and an improved board committee structure.

Thanks to the leadership and support of the Board, Executive Director Doreen Stoller, the talented staff, and the Conservancy members and supporters, the Conservancy has steadfastly moved toward ensuring that the Park is a Houston treasure for years to come. This is a thrilling time for our Park—thank you for your ongoing support of the Conservancy’s efforts.

Sincerely,



Thomas Downing  
2010 Board Chair



# CENTENNIAL CAMPAIGN

Hermann Park's master plan, commissioned in 1993 by Hermann Park Conservancy (then Friends of Hermann Park) and developed by acclaimed landscape architect Laurie Olin, identified \$70 million in necessary park improvements. The master plan has served as a guide for all renovations and enhancements since its adoption by City Council in 1995, and has been approached in phases. The first phase was completed in 2006, while Phase 2 launched the following year.

The Conservancy and the City of Houston aim to complete many of these improvements by Hermann Park's centennial in 2014. Increasing connectivity and accessibility to and within the Park has been a major focus of Phase 2, and one that saw unprecedented progress in the last fiscal year.

## Lake Picnic Area

Thanks to funding from the City of Houston, Phase 1 of the Lake Picnic Area renovation was completed during fiscal year 2010. Visitors enjoy lunches and birthday parties in this shaded area, which links Lake Plaza and the Jones Reflection Pool with winding pedestrian paths. Formerly full of large areas of standing water, this scenic location was improved to include new drainage, lighting, and concrete pathways. The next phase, to include the installation of new picnic tables, paths, and expansive native understory plantings, will take place in fiscal year 2011 thanks to funding from the City of Houston and KBR, Inc.



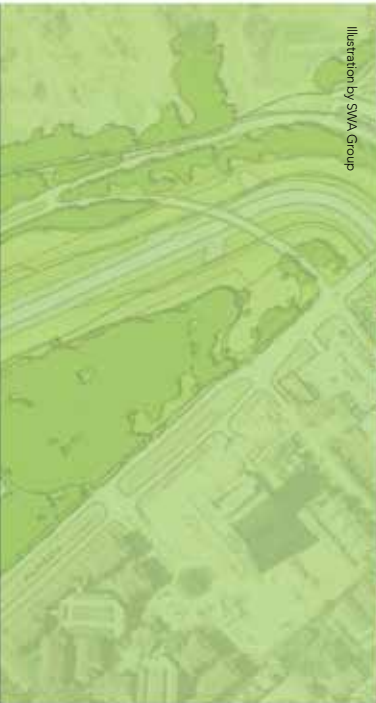


Illustration by SMA Group



## MacGregor Pairing

The pairing of the MacGregors was completed in January, as North MacGregor Way moved off the Park's historic carriage path and closer to South MacGregor Way. Following the construction, the two heavily used roads were separated by a median rather than an expanse of virtually inaccessible land. Thanks to a federal grant, the old paved road is being reclaimed for pedestrian foot traffic.

## Pedestrian Underpass

A pedestrian underpass routing walkers under North and South MacGregor rather than across them was completed during the fiscal year. It will officially open to the public after the completion of Project Brays, the bayou-widening effort by Harris County Flood Control District, and the subsequent trail improvements planned along the bayou.

## Bill Coats Bike Bridge

Thanks to a federal bikeways program, the Texas Department of Transportation, and the City of Houston, a bike bridge to cross Brays Bayou was in the planning stages during fiscal year 2010. Named in memory of civic leader and Park friend Bill Coats, the bridge will connect cyclists from the bayou trails to the heart of the Park.

## Signage

During the summer of 2010, over 100 maps and directional signs were installed throughout Hermann Park, making it easier for vehicles and pedestrians to navigate both to and within the Park. Designed to blend into the Park setting but also provide clear directional prompts to drivers and walkers, the signs assist those trying to reach the various destinations in the Park. Wayfinding maps were posted along trails and walkways to help visitors get around and encourage exploration of the Park's 445 acres.



# CENTENNIAL CAMPAIGN continued



White Oak Studio

## Grand Gateway

Fundraising for the renovation of the Grand Gateway, the historic main entrance to Hermann Park, went full force in 2010.

This landmark location, featured on many a Houston postcard over the last century, was once the site of well-manicured sunken gardens, a look referenced in the conceptual design by White Oak Studio. Limestone planter beds will also tie into the historic beds around the Sam Houston Monument. The project also includes the rehabilitation of the esplanade between Main and Fannin, from the Park entrance to the Texas Medical Center.

The Grand Gateway plan features new landscaping, lighting, irrigation, pedestrian paths, and user amenities from benches to bike racks.

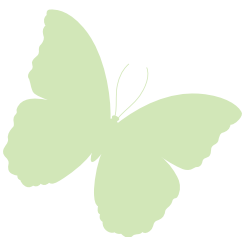


Hoerr Schaudt Landscape Architects

## Hermann Park Garden Center

Planning for the monumental renovation of the Hermann Park Garden Center has also taken root over the past year. Under the guidance of lead landscape architects Hoerr Schaudt of Chicago, the new Garden Center vision has become palpable with the completion of the conceptual design.

The Garden Center, which will likely cost nearly \$30 million including a maintenance fund, has been split into phases, with Phase 1 to be complete by 2014. Phase 1 represents a \$3 million funding need and will begin reconfiguration of the current Garden Center site, moving part of the parking to the outer edges of the Park and reclaiming the breathtaking Live Oak allée that marks the beginning of





# MAINTENANCE & STEWARDSHIP



## Japanese Garden

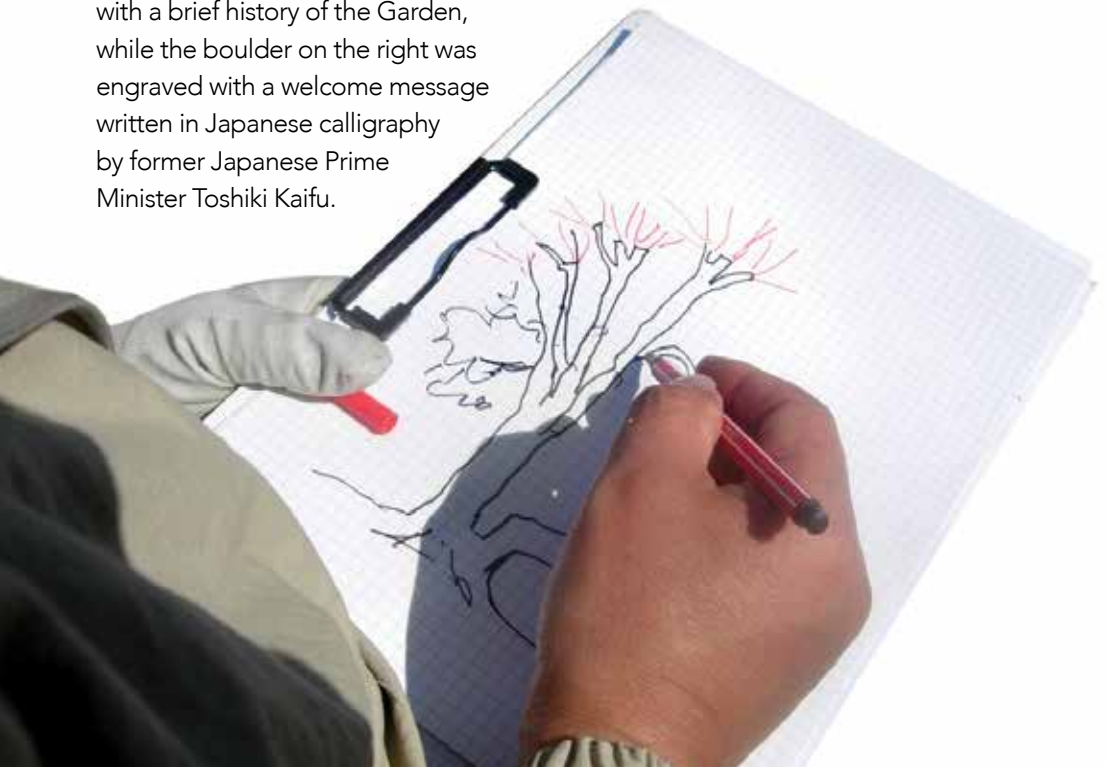
February marked the fourth annual visit from the Japanese landscape team to Hermann Park's Japanese Garden. Focusing on maintenance during their two-week stay, Mr. Terunobu Nakai and Mr. Hiroshi Iwasaki trained staff and volunteers in Japanese pruning and shaping techniques to maintain the look and feel of an authentic Japanese Garden.

The Garden's welcoming entry was enhanced with the etching of the granite boulders which rest on either side of the entrance. The boulder on the left was inscribed in English with a brief history of the Garden, while the boulder on the right was engraved with a welcome message written in Japanese calligraphy by former Japanese Prime Minister Toshiki Kaifu.

## Horticulture

The 2010 fiscal year saw the beginning of a major community collaboration known as Project Blazing Star — a project created to bring endangered native prairie plants back to Hermann Park. Named for the beautiful plant species blazing star, the project has reintroduced Texas tall grass prairie plants to Hermann Park and will ultimately create a colorful, vibrant landscape and a better environment for local wildlife.

Thanks to underwriting sponsor Waste Management and the efforts of several local organizations, thousands of plants have begun to prosper at the first planting site, called the Whistlestop Prairie for its proximity to the Hermann Park Railroad line. Signage posted in the area educates the public about this ongoing project and raises awareness about prairie conservation.







## Maintenance Program

The Conservancy maintenance program was begun in 2003 to assist the Parks Department with the maintenance of Hermann Park, most notably to maintain the improvements built by the Conservancy in partnership with the City of Houston. As the number of capital improvements throughout the Park has expanded, so have the Conservancy's maintenance responsibilities.

The Conservancy maintenance staff focuses seven days a week on the maintenance and cleanliness of the Lindsey Plaza, Jones Reflection Pool, Molly Ann Smith Plaza, McGovern Lake and its perimeter, and the Lake Picnic Area. They also assist the Parks Department horticulturists with duties such as tree planting, watering, and weeding.

During the 2010 fiscal year, the Conservancy's maintenance coordinator and assistant dedicated over 3,100 hours of maintenance to the stewardship of the Park.

## Reforestation

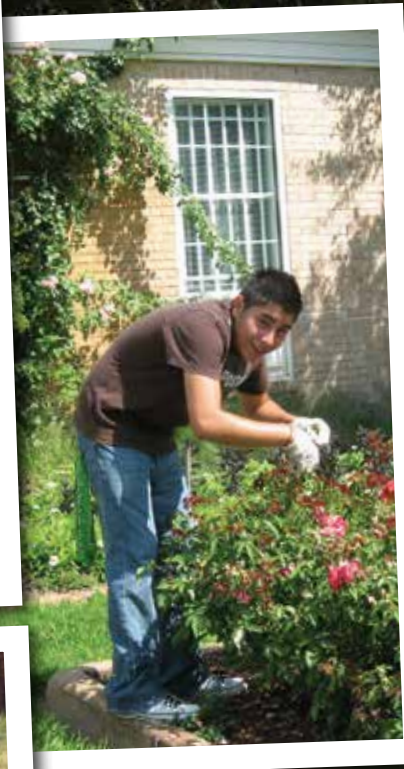
Caring for the trees in Hermann Park is a critical aspect of the Conservancy's maintenance plan. During fiscal year 2010, nearly 200 trees were donated by corporations and organizations for planting in the Park, while others were planted thanks to the Conservancy's Plant a Tree program.

Deep root fertilization treatment was performed on the trees in Lake Plaza during the year to ensure their health, while invasive non-native plant removal helped trees and native plants thrive. Over 1,600 diameter inches of trees were replaced and planted on the MacGregor medians to mitigate trees damaged or lost to the construction of the pairing of North and South MacGregor.

By the close of the year, the Park's tree inventory had grown to include nearly 8,500 trees.

# VOLUNTEERS

*In total, Conservancy volunteers contributed nearly 19,000 hours to various projects throughout the Park during the fiscal year.*





## Volunteer Programs

Volunteer programs established by Hermann Park Conservancy are designed to offer a variety of projects allowing volunteers of all ages, skill levels, and physical capabilities to perform a valuable service to Hermann Park. Under the direction of the volunteer and education coordinator, Conservancy volunteers learn skills, engage in community building efforts, and make a significant difference in Hermann Park. Consider a few special programs and projects that took place during fiscal year 2010:

- In September, the Conservancy participated in National Public Lands Day, offering the community an opportunity to participate in public land management. Roughly 200 volunteers contributed over 800 volunteer hours as they removed invasive plant species from Bayou Parkland and the MacGregor medians.
- Project Blazing Star, a collaborative effort to restore native prairie sites in

Hermann Park, resulted in over 2,000 volunteer hours, completed by hundreds of volunteers. Over 200 students made 8,000 seed balls, and volunteers propagated, rescued, and planted 1,300 prairie plants.

- Conservation Posse, the Conservancy's award-winning summer program for teens, introduced Park stewardship to a dozen selected students, who completed over 100 hours of volunteer service over two weeks in June.
- The Conservancy's job shadowing program yielded 200 volunteer hours while students learned workforce skills by working with horticulturists in the Japanese Garden and the Houston Garden Center.
- Volunteer groups—organized by corporations, schools, churches, service and civic clubs, and more—made a huge impact across the Park, refurbishing benches and picnic tables, removing invasive plants, and planting trees and native plants.





# VISITOR SERVICES

The Visitor Services team is responsible for creating an exciting and memorable experience for Park visitors. Staff members are in the Park nearly every day of the year ensuring Lake Plaza is operating efficiently and safely. Generations of Houstonians have come to expect great things when they come to Hermann Park, and it is the responsibility of the 10 to 15 member Visitor Services staff to surpass those expectations.

The Hermann Park Railroad ended the year with over 377,000 tickets sold and exceeded \$1 million in revenue, a 14% increase over the previous year. An additional \$160,000 in revenue was generated by the pedal boat operations, with nearly 19,000 boat rides on McGovern Lake. The Conservancy gift shop and cafe in the new Lake Plaza welcomed visitors, while private train rides and birthday celebrations were introduced to further grow revenue to support the Conservancy's efforts in the Park.







# CONSERVANCY EVENTS



Pisyllia Dickson



Pisyllia Dickson

Hats in the Park chair Jana Arnoldy and Scotty Arnoldy



Barry Hunsaker and Hats in the Park chair Linda Hunsaker

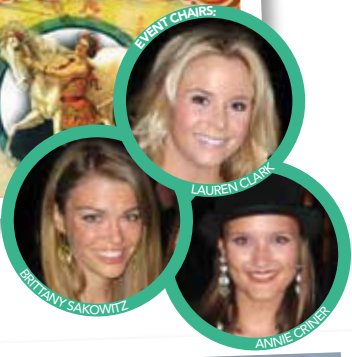
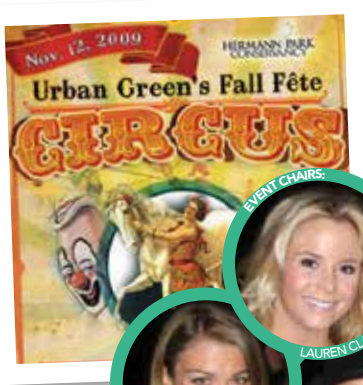


Ed Cowan

Mayor Annise Parker and Hats in the Park honoree Ann Hamilton

## Hats in the Park Luncheon

For the third year in a row, *Hats in the Park* packed the tent on the lawn by the Historic Clubhouse in March. Chairs Jana Arnoldy and Linda Hunsaker put together a colorful event, which grossed over \$221,000 for Hermann Park and drew over 300 fashionable guests. Ann Hamilton, former Houston Endowment Inc. grant officer and long-time parks supporter, was presented the Bob and Elyse Lanier Award by Mayor Annise Parker. Tiffany & Co. generously donated a raffle package that helped raise significant funding for the Grand Gateway restoration project.



## Urban Green

The Conservancy's young professionals' group, Urban Green, successfully introduced the Conservancy's mission to hundreds of new friends as it raised funds through two major events and its membership program. In November, Urban Green's *Fall Fête: Circus*, chaired by Lauren Clark, Annie Criner, and Brittany Sakowitz, offered guests an evening of festival-themed revelry at Kinder Station in Lake Plaza. Following on the heels of this successful event was the derby-inspired *Spring Soirée: A Night at the Races*, chaired by Whitney Bossin, Courtland Crosswell, Kat Hoffman, and Jessica Ledger, in April at the Historic Clubhouse. Each event drew roughly 400 guests and helped Urban Green gross nearly \$35,000 this past year.



Spring Soirée chairs Kat Hofmann, Whitney Bossin, Courtland Crosswell, and Jessica Ledger



## Evening in the Park Gala

The largest fundraising event of the year, *Evening in the Park*, was chaired by Anne and Noble Carl and Lucy and William Carl in May. The Conservancy honored Peter Brown, longtime Park friend, for his contributions both as an architect and a public official. Always a treat, this beautiful outdoor event brought together over 400 supporters to celebrate the ongoing transformation of Hermann Park. Thanks to Saks Fifth Avenue, fashion designer Devi Kroell was in attendance for this memorable evening. She generously donated leather key chains to guests as party favors and an exotic leather handbag for the raffle. Exclusive Resorts provided a luxurious vacation stay for the live auction following the dinner. All together, the festive event grossed over \$336,000 in operating support to keep the Conservancy going strong.

Evening in the Park chairs  
William and Lucy Carl



Evening in the Park chairs  
Noble and Anne Carl



Evening in the Park honoree Peter Brown  
and Doreen Stoller



Hermann Park Conservancy is grateful to all who generously contributed to the beautification, restoration, and improvement of Hermann Park during fiscal year 2010.

### **Garden Conservancy Fund**

\$100,000-\$249,999

Genevieve Lykes Duncan  
Bequest

\$500-\$999

Maryann and Scott Ingersoll

\$100-\$499

Arif Khan

Memorials and Honoraria

In memory of Bill Coats

Deborah Yahner

In memory of Victoria Schull

Demaris and Hank  
Hudspeth

### **Habitat Conservancy Fund**

\$100-\$499

Beau Alexander

Dorothy Carsey Sumner

Memorials and Honoraria

In memory of Bill Coats

Tetra Tech EC, Inc.

### **Tree Conservancy Fund**

\$100-\$499

Rick Kammerer

Memorials and Honoraria

In memory of Bill Coats

A friend of Bill Coats

Starlett and Ben

Hollingsworth

Hinda and Barry Simon

In memory of May Shelmire  
Duncan

Genevieve Lykes Duncan

In memory of Mark Folkes

Suzanne and Peter Day

### **General Endowment Fund**

Memorials and Honoraria

In memory of Bill Coats

Camden Property Trust

### **Centennial Campaign**

\$25,000-\$49,999

Crooker Charitable

Foundation, Inc.

\$1,000-\$4,999

Rick Kammerer and

Tim Cagle

Doreen Stoller and Dan Piette

Cheryl and James Watson

\$100-\$499

Leila Perrin

Memorials and Honoraria

In memory of Bill Coats

Roberts, Taylor &

Sensabaugh, Inc.

### **Hermann Park Railroad**

\$250,000-\$499,999

John P. McGovern

Foundation

Memorials and Honoraria

In honor of Jack S. Blanton, Sr.

Meg and Dick Weekley

### **Grand Gateway**

\$250,000-\$499,999

The William Stamps Farish

Fund

\$10,000-\$24,999

CenterPoint Energy

The Garden Club of Houston

\$5,000-\$9,999

Sharon and Cecil Griffin

Steppie and Robert Holsclaw

\$1,000-\$4,999

Rod Danielson and

Kelly DeHay

Sheila and Isaac Heim binder

River Oaks Blossom Club

\$100-\$499

Philamena and Arthur Baird

Angelia Clarady

Linda and Jay Comeaux

Susie and Sanford Criner

Laura Downing

Thomas Downing

Gabriela and Daniel Dror

Ellie and Michael Francisco

Rod Frazier

Allen Frieze

Stephen Goldberg and

Tim Kollatchny

Jackson Hicks and

Milton Townsend

Leisa Holland-Nelson

Mike Holloman and

Tim Surratt

Victoria and Mike Jones

Tab Judd

Shannon Langrand and

Matthew Emal

Darla Lexington

Randy Mitchore

Anita and Gregory O'Neil

Vicki Rizzo

Doreen Stoller and Dan Piette

Susan Vick

Beth Wolff

Gaye Lynn and Stuart Zarrow

Memorials and Honoraria

In memory of Nancy Attwell,

Jack Collier, Wayne

Duddleston, Dan Duncan,

Francis Fendley, Roger

Jenswold, Nancy Prior,

Weldon Weekley, and

Phoebe Welsh

Ray C. Fish Foundation

In honor of Lynda and David

Underwood, Thad Grundy,

and friends of Letitia

Elizabeth Knapp

Letitia Elizabeth Knapp,

Mr. and Mrs. Breckinridge

Knapp

### **Lake Plaza**

\$100,000-\$249,999

The Margaret and James A.

Elkins, Jr. Foundation

\$25,000-\$49,999

The Vale-Asche Foundation

\$5,000-\$9,999

Harry S. & Isabel C. Cameron

Foundation

The Tapeats Fund

In Kind

Overland Partners Architects

### **Garden Center**

\$50,000-\$99,999

The Anchorage

Foundation, Inc.

In Kind

Hotel ZaZa Houston

Susan and Richard Keeton

### **Bayou Parkland**

\$25,000-\$49,999

Texas Parks and Wildlife

### **Japanese Garden**

\$10,000-\$24,999

The Japan-America Society  
of Houston, Inc.

The Japanese Garden, Inc.

\$1,000-\$4,999

Japanese American Citizens

League (JACL) Houston

Chapter

Solange Knowles

\$100-\$499

Ikebana International

Chapter 12

Barbara and Dennis

Kanegaye

Piney Woods Garden Club

### **Rotary Grove**

\$1,000-\$4,999

River Oaks Rotary

Charitable Trust

### **Horticulture and Maintenance**

\$5,000-\$9,999

Waste Management

In Kind

Native Plant Society Houston

### **Reforestation and Maintenance**

\$25,000-\$49,999

KBR, Inc.

\$10,000-\$24,999

KBR Charitable Foundation

\$5,000-\$9,999

Christopher Lykes Knapp

\$500-\$999

John E. Walsh, Jr.

In Kind

Apache Foundation

Chevron

### **Plant a Tree**

\$1,000-\$4,999

Franci and Jim Crane

Memorials and Honoraria

In memory of General and

Mrs. Robert H. Barrow

Barbara and Dennis

Kanegaye

In memory of Zelmar Barson

Jeff Gilbert

In memory of Bill Coats

Heather Asselin and

Thomas M. Vallega, Jr.

Camden Development, Inc.

Frances and Oskar Cerbins  
 Cecilia Coats  
 Ann Lents and  
 David Heaney  
 Cherly and James Leonard  
 Jack McGinty, FAIA and  
 Vicki Ashy of McGinty  
 Architectural Consultants,  
 L.L.P.  
 Barbara and Tommy  
 Pendergrast  
 Cici Vu and Peter Coats  
 Carol and Robert Weir  
 Cad and Byron Willeford  
 In honor of Leslie and Bill Coe  
 Carolyn C. Rogers  
 In honor of Isabel and David  
 de Kanter  
 Cassandra Louise  
 de Kanter  
 In memory of Dun Gifford  
 Ann and Don Short  
 In honor of Rosemarie and  
 Matt Johnson  
 Gracia and Robert Duncan  
 In memory of Lucy  
 Kate Hill  
 In honor of Laurence K.  
 McMahon  
 Mike McBath  
 In honor of Lucy McMahon  
 Harry McMahon  
 In honor of Gabrielle M.  
 Messina  
 Mike McBath  
 In memory of O'Dell Alford  
 Muse  
 Melinda Muse  
 In honor of the Oaks of  
 Caroline Homeowners  
 Association  
 Wade Maybery  
 In memory of Maxine Hart  
 Prewitt  
 Debra Thompson Ireland  
 In honor of Aleksander  
 Quang-Minh Pinn  
 Theresa and Daniel Pinn  
 In memory of Audrey Quast  
 Ann and Don Short  
 In honor of Hinda Simon  
 Mary Flood Nugent  
 In honor of John E. Walsh, Jr.  
 Allison and Tom Stovall

## Volunteer Programs

\$5,000-\$9,999  
 ExxonMobil Foundation  
 United Way of Greater  
 Houston Community  
 Building Grant

\$1,000-\$4,999  
 CenterPoint Energy  
 Lyondell  
 Shell Oil Company

In Kind  
 Chick-fil-A  
 Chipotle Mexican Grill  
 The John C. Freeman  
 Weather Museum

## Evening in the Park Gala

*(All gifts in honor of Peter  
 Brown, honoree, and chairs  
 Anne and Noble Carl and  
 Lucy and William Carl)*

\$25,000-\$49,999  
 Cherie and Jim Flores  
 Kathy McGovern/John P.  
 McGovern Foundation

\$10,000-\$24,999  
 Anchorage Foundation of  
 Texas  
 Rosemarie and Matthew  
 Johnson  
 Strake Foundation  
 Phoebe and Bobby Tudor  
 Sheridan and John Eddie  
 Williams

\$5,000-\$9,999  
 Gina and Devinder Bhatia  
 Anne and Peter Brown/  
 Carolyn and Jimmy  
 Robertson  
 Anne and Noble Carl/  
 Lucy and William Carl  
 CenterPoint Energy/  
 June Deadrick  
 Anne and John Clutterbuck  
 Susie and Sanford Criner  
 Curtis & Windham Architects/  
 Catherine and Edward Crain  
 Friedman Foundation/  
 Michele and Brent Friedman  
 Terri and John Havens  
 Christine and Gregg  
 Hollenberg  
 JPMorgan Chase  
 Ann Kennedy and  
 Geoffrey Walker  
 June and Tommy Lott  
 Sandra and Ken Moffet/  
 Hourglass Capital  
 Vivie and Chris O'Sullivan  
 Louisa Stude Sarofim  
 Ann and Don Short  
 Alicia and Lance Smith  
 Kim and Dan Tutcher  
 \$1,000-\$4,999  
 Chinhui and Eddie Allen  
 Arnold & Langrand  
 Communications  
 Jay Baker  
 Baker Botts L.L.P.  
 Marion Barthelme and

Jeff Fort  
 Janie and Dick Beeler  
 Mary Ann and Bruce Belin  
 Minnette and Peter Boesel  
 Maria and Neil Bush  
 Kara and Ray Childress  
 Andy Cordes and  
 Brad Alexander  
 Almeria T. Cottingham  
 Judy and Bob Craig  
 Mary and Mark D'Andrea/  
 Gulf Coast Cancer &  
 Diagnostic Center at  
 Southeast  
 Isabel and Danny David  
 Steve Dolman  
 Rodney Drinnon  
 Bevin and Dan Dubrowski  
 Kay and Al Ebert  
 Marilyn and Lynn Elliott  
 Jo Lynn and Gregg Falgout  
 Fant Foundation  
 Cheri and Andrew Fossler  
 Cece and Mack Fowler  
 Maco Stewart Fowlkes  
 Lisa and George Francisco  
 Susan and Mike Garver  
 Kate and Steve Gibson  
 Gilbane Building Company  
 Jennifer and Lance Gilliam  
 Maureen and Geoff Goddard  
 Deborah Grotfeldt and  
 John Walsh  
 Beth and Curtis Harrell  
 Hildebrand Fund  
 Dorothy and James Hill  
 Holthouse Foundation  
 for Kids  
 Linda and Barry Hunsaker  
 Kathleen and Mike Johnson  
 Sis and Hasty Johnson  
 Marianne and Rob Jones  
 Rick Kammerer and  
 Tim Cagle  
 Susan and Richard Keeton  
 Margaret L. Kripke and  
 Isaiah J. Fidler  
 Legacy Community Health  
 Services  
 Diann and Mike Lewter  
 Sara and John Lindsey  
 Carol and Michael Linn  
 Nancy and Erik Littlejohn  
 Nancy Manderson and  
 Bill Coats  
 Lisa and Will Mathis  
 Susan and Jack Mayfield  
 Jackie and Malcolm Mazow  
 Joan and Doug McLeod  
 Jessica and Philipp Meyer  
 Joy and Stewart Morris, Jr.  
 Sharon and William Morris III  
 Lisa and Mike Mount  
 Mary Tere and Ricardo  
 Perusquia  
 Isla and Tommy Reckling  
 Megan and Chris Reed  
 Kim and Chris Reichert  
 Leslie and Shannon Sasser  
 Family Fund  
 Barbara and Louis Sklar  
 Aimee and Wynne Snoots, Jr.  
 Elizabeth and Alan Stein  
 Doreen Stoller and Dan Piette

Anne and Taft Symonds  
 Lynda Underwood and  
 Letty Knapp  
 Diana and Conrad Weil, Jr.  
 Family Foundation  
 Sue Trammell Whitfield  
 Jennifer and Burke Windham  
 Sallie and Bob Wright  
 Lorraine and Ed Wulfe

\$500-\$999  
 Anonymous  
 Jana and Scotty Arnoldy  
 Pam and John Barineau  
 Anne T. Carl  
 Jo A. Casady  
 Jackson Chang  
 Neva and John Dawson  
 Patricia and David Dewhurst  
 Thomas Downing  
 Mary O. Driscoll-Levy  
 Debbie and Gary Gibson  
 Edna Gonzalez Houston  
 Terry Wayne Jones  
 Lisa and Drew Kanaly  
 Tricia Moody  
 D. Patricia Nelson  
 H. Joe Nelson III  
 Kathleen O'Reilly  
 Valerie Palmquist  
 Charles Perlitz  
 Elizabeth and Gary Petersen  
 Pierre Deux  
 Michael Rudelson  
 Evelyn and Kevin Shanley  
 Kathy and John Stanton  
 Cassie B. Stinson  
 Beth and Joe Weikerth  
 Randa and K. C. Weiner

\$100-\$499  
 Jane Anderson Curtis and  
 Bill Curtis  
 Karen and Everett Anschutz  
 Kathryn and David Berg  
 Alan Bigman  
 Susan Boggio  
 Mark Bouzek and  
 Deborah Parks  
 Robin and Richard Brooks  
 Donna and Max Buja  
 Virginia and William Camfield  
 Laurie and Paul Carl  
 William Caudell and  
 Randy Powers  
 Louise and Denton Cooley  
 Shawn and Chuck Dalio  
 Tracy Dieterich  
 Holly and St.-John Dinsmore  
 Sara P. Dodd-Spickelmier and  
 Keith D. Spickelmier  
 Rachel and James Dunlap  
 Tamara and Pat Dyer  
 Tara and Stacy Eastland  
 Jane and Gus Eiffler  
 Nene Foxhall  
 Ellie and Michael Francisco  
 Martha and Donald  
 Freedman  
 Jo Claire and Henry Gissel  
 Carolyn and Carlos Hamilton  
 Sandy and Bob Herrin  
 Dorene and Frank Herzog  
 Merle Hunsaker  
 Gaye and John Kelsey  
 Wendy and Mavis Kelsey,





Jr. Fund

## **Evening in the Park Gala, continued**

\$100-\$499

Devi Kroell  
Lucy Lee and Charles Lamme  
Bedelle S. Langdale  
Carolyn C. Light  
Jennifer and Todd Litton  
Marley Lott  
Susie and Skip McGee  
Paulina McGrath  
Nancy McGregor and  
Neal Manne  
Susan and Tom McMahan  
Kathryn McNeil  
Brad McWilliams  
Susanna and Palmer  
Moldawer  
Kim and Dan Moody  
Beth Sanders Moore and  
Jess Moore  
Maria O'Hanna  
Karen and Scott Rozzell  
Luigi Ruggieri  
Sadako Sakashita and  
John Stroehlein  
Candice and Lonnie Schiller  
Cathryn and Doug Selman  
Carol and William Simmons  
Louis H. Skidmore, Jr.  
Ed Smith  
Melissa and Stacy Smith  
Michael Torres  
Nicola and Richard Toubia  
Saula Valente  
Marion and Ben Wilcox  
Pamela and Jack Wright

### **Memorials and Honoraria**

In memory of Gay C. Brinson  
Lucy and William Carl  
In memory of  
Erin Gregory Neale  
Terrylin G. Neale

### **In Kind**

Baccarat  
Continental Airlines, Inc.  
Devi Kroell  
Lane Llewellyn  
Gary Moore  
Stewart Morris/  
Stewart Title Company  
The New Nursery (Newton)  
PaperCity Magazine  
Pierre Deux  
Rachel and Tom Regan/  
Exclusive Resorts  
Saks Fifth Avenue  
Alicia Smith/ Innovative Legal  
Solutions  
Swift + Company



## **Hats in the Park Luncheon**

*(All gifts in honor of  
Ann Hamilton, honoree,  
and chairs Jana Arnoldy  
and Linda Hunsaker)*

\$10,000-\$24,999

Jana and Scotty Arnoldy  
Cherie and Jim Flores  
Carol Linn/LINN Energy  
John P. McGovern  
Foundation  
Bobbie Nau/Silver Eagle  
Distributors  
\$5,000-\$9,999  
Denise Bahr/Donna Bruni/  
Ellie Francisco/Kim Tutcher  
Blanton Family/Scurlock  
Foundation  
Alice Burguiques/Karen Huff  
CenterPoint Energy  
Susie and Sanford Criner  
Clayton Erikson/  
Lynn Swanson  
Hildebrand Fund  
Linda and Barry Hunsaker  
Jackson and Company  
The Robert and Janice  
McNair Foundation  
Laurie and Reed Morian  
Ann and Don Short  
Paul G. Somerville/Associated  
Pipe Line Contractors, Inc.  
St. Luke's Episcopal Health  
System  
Phoebe Tudor  
Sheridan Williams

\$1,000-\$4,999  
Scott J. Atlas Philanthropic  
Fund  
Marion Barthelme and  
Jeff Fort

Lois Chiles  
Franci Crane  
Susie Cunningham  
Brenda and John H.  
Duncan, Sr.  
Jenny and Jim Elkins  
Maureen Goddard  
Sandy Godfrey  
Terry Hershey  
Starlett Hollingsworth  
Margaret Larkin  
Ann Lents  
Penny Requa Loyd  
Catherine Clark Mosbacher  
Katharine Newman  
Evelyn Nolen  
Petrello Family Foundation  
Isla Recking  
Carolyn Robertson  
Courtney Sarofim  
Kathy and Ed Segner  
Ellen and Steve Susman  
Jennifer Wilson

\$500-\$999

Clair and Tom Amonett  
Shirley Bainter  
Jay Baker  
Gina Bhatia

Carole Bilger  
Deana Blackburn  
Rosanna Blalock  
Jane Bonham  
Polly Bowden  
Marsha Braniff  
Pat Breen  
Catherine Brock  
Valerie Carter  
Liz Howard Crowell  
Sylvie Crum  
Hilda Curran  
Veronica Curran  
Mary D'Andrea/Gulf Coast  
Cancer & Diagnostic Center  
Isabel David  
Nancy Dinerstein  
Sara Dodd-Spickelmier  
Gabriela Dror  
Sue Edelman  
Patti Everett  
Mary Ann and Larry Faulkner  
Deborah Ginsburg  
Carol Herder  
Kay Holmes  
Merle Hunsaker  
Barbara Hurwitz  
Rick Kammerer and  
Tim Cagle  
Susan Keeton  
Caroline Kenney  
Colleen Kotts  
Margaret Kripke  
Harriet Latimer  
Cornelia Long  
Marley Lott  
Cora Sue Mach  
Anne C. Mendelsohn  
Denise and Bill Monteleone  
H. Joe Nelson III  
Barb Noel and Sharon Noel  
Mauri Oliver/Vicki Rizzo  
Pam Ott  
Tina Pyne  
Martha Ann Snyder  
Dian Stai  
Cassie B. Stinson  
Mary Jane Wakefield  
Martha S. Walton  
Isabel B. Wilson  
Susan Wolcott  
Sallie Smith Wright

\$100-\$499

Lilly Andress  
Madeleine Appel  
Kathleen Barndt  
Karol Barnhart  
Sandy Barrett  
Kate Criner Bellin  
Susie Bender  
Kathryn Berg  
Collier Blades  
Minnette Boesel  
Catherine Carrigan  
Bettie Cartwright  
Jo A. Casady  
Gracie Cavnar  
Ceron  
Kara Childress  
Lisa Clemenceau  
Michele Clements  
Bill Coats  
Yvonne Cormier  
Anne Coskey  
Carolyn Crosswell  
Mimi Del Grande  
Thomas Downing  
Joan Dunlap  
Maria Dunn  
Danielle Ellis  
Ann Fromholz  
Paula Fyhr  
Sharin Gaille  
Kerry Gerachis  
Kate Gibson  
Susan Hansen  
Terri A. Havens  
Patti Hemingway  
Carol Hess  
Marnie Hogan  
Leisa Holland-Nelson  
Lisa Holthouse  
Pamela Howard  
Molly Hubbard  
Demaris Hudspeth  
Pam Hunsaker  
Mary Johnston  
Debbie Jones  
Terry Wayne Jones  
Gaye Lovett Kelsey  
Ann Kennedy  
Carolyn Moore Khourie  
Kate Kirkland  
Elyse Lanier  
Nancy Littlejohn  
David R. Lummis  
Frances Marzio  
Karen Mayell  
Kate McConico  
Nidhika Mehta  
Cynthia Mills  
Tara Mize  
Cheryl Monteith  
Marsha Orloff  
Susan Osterberg  
Imogen Papadopoulos  
Sarah Hodges Parks  
Susan Rafté  
Robin Reimer  
Franelle Rogers  
Regina Rogers  
Elizabeth Scully  
Carson Seeligson  
Mary Smith  
Marcia Solomon  
Jennifer Tektiridis  
Claire Thielke  
Pamalah Tipps  
Betty Tutor  
Cynthia and Edward Urquhart  
Astrid Van Dyke  
Carol Weaver  
Leslye Weaver  
Randa Weiner  
Vicki West  
Ann Wolf  
Cyvia Wolff

### **Memorials and Honoraria**

In honor of Quentin Batia  
Martha Finger  
In honor of Drake, Mia, and  
Morgan Bhatia  
Gina Bhatia  
In honor of Jack Blanton  
Kelli Blanton  
In honor of Anita and

Harry Brandstrader  
Karen A. Rozzell  
In honor of Paul Carlotti  
Safari Carlotti  
In honor of Bill Coats  
Bettie Cartwright  
In honor of Susie and Sanford  
Criner  
Marita Fairbanks  
In honor of Sydney Goddard  
Maureen Goddard  
In honor of Ann Kennedy  
Susan Stasney  
In honor of Carol Linn  
Ann Bookout  
In honor of Laurie Morian  
Linda Hunsaker  
In honor of Bobbie Nau  
Laurie Morian  
In memory of  
Erin Gregory Neale  
Doreen Stoller  
In memory of  
Maurine Lively Pine  
Lauren Clark  
In honor of  
Carolyn Robertson  
Lynn Glazer  
Franna Litton  
Lois Y. Taber  
In memory of Michelle Rozzell  
Maggi Ashworth Jones  
In honor of Ann and Don  
Short  
Becca Cason Thrash  
In honor of Ann and Don  
Short and Y. Ping Sun and  
David Leebron  
Karen and John Bradshaw  
In honor of Eliza Wright  
Marjorie C. Hutcheson

#### In Kind

Neiman Marcus  
The New Nursery (Newton)  
Tiffany & Co.  
Sir Philip Treacy

#### Urban Green

\$1,000-\$4,999

Margo and Gary Harrod

\$500-\$999

Annie Criner  
Steve Dolman

\$100-\$499

Jordan Allison  
Rachel and Tim Ballengee  
Alex Baron  
Linsay Brauchle  
Divya and Chris Brown  
Christopher Cash Cameron  
Katie Christman and  
Franklin Bynum  
David Cordua  
Susie and Sanford Criner  
Courtland Crosswell  
Brad Dinerstein  
Marc Eichenbaum  
Josh Espinosa and  
Eric Marche  
Rachel Etheridge and  
Sebastien Solar  
K. E. Evans  
Alan Falik

Katherine and Joe Gonyea  
Sara Beth Good  
John Guss  
Bruce Haupt  
Kelley Hengst and  
Kacey Baccus  
Kim and Arthur Hofmann  
Veronica Juarez  
Joy Kaplan  
Andrea Krueger  
Brittany LaPorte and  
Steven Douglas  
Blake Lasuzzo  
Sarah Lawson  
Ernest Lizcano  
Austin McDowell  
Tom McGinn  
John McLaughlin  
Emily Merrill  
Nyanza and Erik Moore  
Caroline Negley  
Leigh Nelson  
Jennifer E. Nevins  
Valerie Palmquist  
Georgea Pappas  
Rebecca Pappas  
Maria Patti  
Ashlie Pierce  
Becca and Chandler  
Quisenberry  
Juliana Rabe  
Lea and Tom Radom  
Stephen Rimes  
Brittany Sakowitz  
Mimi Sapp  
Mollie Schall  
Sidney Short  
Sissy Shuffield  
Laura and Mike Sweeney  
Landon D. Taylor  
Claire and Rick Thielke  
Margot Tompkins  
Amy Tucker  
Allen Ueckert  
Rachael and Jason Volz  
WaterLogic, Inc.  
Maudie Werlin  
Drew Womack  
Katie Womack  
Worth Wray  
Ashley and Payton Wright  
Michael Yates  
Allison Young

#### In Kind

106.9 The Point  
à bientôt  
Absolut  
Alden Limo  
Alley Theatre  
Aramark  
Bergner & Johnson  
BrightBox, Inc.  
Buffalo Trace  
Butter Catering  
Ceron  
Christina Miller Designs  
Crowley Signs  
DJ Mike C  
Groupon  
Gulf Coast Entertainment  
Hideous Liquor  
Houston Ballet  
Houston Grand Opera  
HOUSTON Magazine  
Last Concert Cafe

Little Bigs  
My Fit Foods  
Obsessive Compulsive  
Design  
Pappas Restaurants  
Patricia Peckinpugh  
Photo con Queso  
Raising Cane's Chicken  
Fingers  
Riazul Premium  
Rice Food Markets, Inc.  
Ruggles Green  
Saint Arnold Brewing Co.  
Silver Eagle Distributors, L.P.  
Svedka  
Swift + Company  
Texadelphia  
Three Olives  
Tony's Inc.  
Tri-C Resources, LLC  
Vintage Lounge  
Wild Turkey  
Sheridan and John Eddie  
Williams

#### Membership

Conductor's Circle (\$2,500+)

Anonymous  
Elizabeth A. Germani  
Christine and Gregg  
Hollenberg  
Mike Holloman and  
Tim Surratt  
Sheridan and John Eddie  
Williams

Platinum (\$500-\$2,499)

Beau Alexander  
Lee and Bob Ardell  
Jenny and James Calaway  
Jo A. Casady  
Concordia Foundation  
Cathy and Wayne Donnelly  
Michael Dooley  
James Fiume  
Lainie Gordon and David  
Minberg  
Susan and Robert Hawkins  
G.G. Hsieh and  
Mark Hausknecht  
Dr. and Mrs. William W.  
Ishee, Jr.

Kathy and Randy Lake  
Kate and Jim Lykes  
Stephen A. Massad  
Gary McGuire  
Mary and Terry Murphree  
Tassie Nicandros  
Barb and Will Noel  
Shelly and Marty Power  
Kitty and Peter Quinn  
The Chris Reichert Family  
Mary and Brian Rollins  
Gabriela Rondon and  
Sergio Giralt  
Marisue and George Tallichet  
Adrienne and Tim Unger  
Kay and Max Watson  
Beth and Joe Weikerth  
Sallie and Bob Wright

Gold (\$250-\$499)

Viki Anderson  
Anonymous (2)  
Barbara Bass  
Benno J. Bauer, Jr.

Jeanne Bauer and  
Walter N. Hittelman  
William Boyer  
Barbara and Michael Caswell  
Frances and Oskar Cerbins  
Cockrell Family Fund  
Debra and Stephen Costello  
Connie and Bill Cox  
Linda and Mark Egan  
Brenda Farrell and  
Wayne Thompson  
Janice Ford Griffin  
Susan and Mike Garver  
Clare A. Glassell  
Stephen Goldberg and  
Tim Kollatchny  
Annie and Robert Graham  
Judy and Peter Harding  
Edna Gonzalez Houston  
Stacy and Scott Humphries  
Demetra C. Jones  
Rick Kammerer and  
Tim Cagle  
Elizabeth and Albert Kidd  
Dan A. King  
Harriet and Truett Latimer  
Joseph Leonard  
Heather and Marcus  
Malonson  
H. Joe Nelson III  
Kitty Neuhaus  
Judy and James Nicklos  
Ruth and Quincy Ollison  
Carolyn and Thomas Paul  
Leila Perrin  
Carol and Dan Price  
Victoria and William Ramos  
Sanila Rana and Per Irgens  
Macey and Harry Reasoner  
Gay A. Roane  
Lisa and Scott Slaney  
Lynn and Mike Smith  
The Southampton Group  
Doreen Stoller and Dan Piette  
Ruth and Marvin Taylor  
Gretchen and Greg Tharp  
Michele Thompson  
Lucie Wray Todd  
Shari and Gary Winston

Silver (\$100-\$249)

Suzanne and Brian Adams  
James S. Alley, Jr.  
Anonymous  
Karen and Everett Anschutz  
Madeleine and Michael  
Appel  
Sherry Applewhite  
David Archer  
Charles E. Armstrong  
Susie and David Askanase  
Elizabeth and Howard Ayers  
David Beebe  
Karen V. Bentsen  
Sandra Bernhard  
Louise and Charles Berry  
Andree A. Boudreaux  
Susan and Major Bradshaw  
Nancy and Patton Breland  
Shirley and David Brightwell  
William C. Broderick  
Irma and Louis Bujnoch  
Cindy and Larry Burns  
Robert Burress

Patricia and Ian Butler  
Tara and Mallory Caldwell  
John D. Carrara, Jr.  
Debbly Chambers  
**Membership, continued**  
**Silver (\$100-\$249)**  
Kara and Ray Childress  
Barbara K. Chiles  
Brenda and Joe Cialone  
Donna Cole  
Mary and Michael Comer  
Julie Cohn and John A.  
Connor  
Lisa and Pete Coppel  
Carol and Bob Cossum  
Flo Crady  
Patsy Cravens  
Courtney Black Danile and  
Marc Danile  
Kevin Dewhurst  
Francoise and Ed Djerejian  
Steve Dolman  
Cara and Gary Doughty  
Judith and Frank Douglas  
Genevieve Lykes Duncan  
Peggy and Bert DuPont  
Nan and Ed Earle  
Susan and Richard Edelman  
Toni Edwards  
Loann and John Eiman  
Barry Elliott  
Gwendolyn A. Essinger  
Yolande and Edward Eugere  
Douglas Eyberg  
Linda M. Fahr and  
James D. Watson  
Anne and Stephen Farish  
Andrea and David  
Faulkinberry  
Fredrica and Bill Fester  
Nanette and Jerry Finger  
Barbara and John Fitch  
Melissa and Doug Fordyce  
Rachel and Bud Frazier  
Rod Frazier  
Alice Gates  
Karen and Larry George  
James H. Gibbons  
David K. Gibbs  
Maureen and Geoff Goddard  
Michael B. Good  
Lou Ann and Milton Gray  
Lisa and Stephen Greenberg  
Anne and Dan Hagen  
Jo Ann and Morey Haymond  
Monica McKnight Heal and  
Steven Heal  
Paula Hix  
Virginia W. Hoops  
Gwendolyn and Donald  
Howell  
Monika Hruby and Denys  
Thorez  
Marjorie and Palmer  
Hutcheson  
Monica Hwang  
Imperial Oil Company  
Kathleen and James Jennings  
Ann Marie Johnson and  
R. Davis Maxey  
Carolyn and Jake Johnson  
Debbie and Frank Jones  
Sultana Kaldis

The Keeling Family  
Mr. and Mrs. Kevin Kelleher  
Betty and Jim Key  
Ike Klein  
William H. Klein  
Carla Knobloch  
Linda and David Knowles  
Katherine Kohlmeier  
Elayne and Demo Kouzounis  
Alicia Kowalchuk and  
Benjamin Saldana  
J. Mark Kressenberg  
Gwen Kunz  
Leslie and Tom Kutac  
Debra H. LaPorte  
Stephanie and Ed Larsen  
Milam E. Leavens  
Polly Lewis and  
Michael Pierson  
Little Thinkers Day Care and  
Learning Center  
Anne Loo and Brad Nyberg  
Kathy and Tom Lord  
The Lorenz Family  
Cecilia and Peter Ludwig  
Janet Lyon and Brent Jett  
Evangeline and Peter  
Mackintosh  
Stephen Madden  
Adah and Michael Mahon  
Shannon and James Mann  
Linda and Judson Massingill  
Wade Mayberry  
Judy and Michael McEnany  
Heather and Leo McIntyre  
Jerry McNeill  
Miriam and Jack Meyers  
Carol and Bob Miller  
Carol and Roland Miller  
Diane and David Modessett  
The Montalvo Law Firm  
Tricia and George Moody, Jr.  
Cristina and William Moore  
Louise and Gary Moss  
Karol and Dan Musher  
D. Patricia Nelson  
David Newton and  
Billy Merryman  
Marcia Noebels  
Marlene and Daniel Norman  
Michol O'Connor  
Kay and Robert Onstead  
Kathleen Ownby  
Denise and Ronald Parsons  
JoAnn Peeks and Allan Ring  
Theola Petteway  
Mary Ann H. Phillips  
Esther and Gary Pollard  
Pam and Jim Pool  
James W. Porter  
Tristan E. Propst  
Marcia and Les Randall  
Janet Rarick and  
Benjamin Kamins  
Enrique Raso  
Alan Reid  
Helena and Brennan Reilly  
Suzy and Sandy Rhodes  
Dale A. Rudick  
Sadako Sakashita and  
John Stroehlein  
Victoria and William Schull

William Shrader  
David Slater  
Len and William Slusser  
Karen and Ken Soh  
William Streng  
Phillip Sun  
David R. Swenson  
Ginny and Ed Szkaradnik  
Gabrielle and Heinrich  
Taegtmeier  
Cynthia and Allan Tang  
Susan and Leonard Teich  
Kathy and Tom Tellepsen II  
Mardy and James Byron  
Thomas  
Marian and Harry Tindall  
Kim A. Tran and David Cox  
Kim and Dan Tutcher  
Pattie and Jim Tye  
Eleanor and Richard Viebig  
Gail and Thomas Viele  
Rabbi Roy A. Walter,  
Congregation Emanu El  
Anita and Charles Weiner  
W. Thomas Weir  
Kathy J. Welch and  
John T. Unger  
Robert R. White  
Lettalou G. Whittington  
Meador and Norm Winghamton  
Jennifer and Burke Windham  
Brian Witt  
Carrie and Ron Woliver  
Dr. and Mrs. Barry P. Wood  
Parvin Yazdi and  
Brandon Stone  
Linda and Richard Zoll  
**Memorials and Honoraria**  
In memory of Bill Coats  
Stephanie and Ed Larsen  
In honor of Ruth McConnico  
Kate McConnico  
In memory of Margaret C.  
Skidmore  
Louis H. Skidmore, Jr.  
In memory of Sally Tinkham  
Kris and Jeffrey Tinkham  
In memory of  
Robert G. Wilson  
Jeanne and Andrew Hero  
In honor of Matthew Wolfe,  
Rice MBA Graduate 2010  
Marilyn Wolfe-Kirk

### **Annual Fund/ General Contributions**

**\$25,000-\$49,999**

The George and Mary  
Josephine Hamman  
Foundation

**\$5,000-\$9,999**

Jay Baker  
Comex Corporation  
Steppie and Robert Holsclaw  
Kathy McGovern  
Plumbing Systems  
The Powell Foundation  
Phoebe and Bobby Tudor  
**\$1,000-\$4,999**  
Anonymous  
Margaret and John Burns  
Janet F. Clark

Linda and Mark Egan  
H. Fort Flowers Foundation,  
Inc.  
Takaaki Furuta  
The Jacob and Terese  
Hershey Foundation  
Robert W. Knox, Sr. and Pearl  
Wallis Knox Foundation  
Jay Moore  
Mary and Terry Murphree  
The Oshman Foundation  
The Roaring Fork Club  
Rome Family Fund  
The Samuels Foundation  
Jane Schmitt  
John E. Walsh, Jr.  
Waste Management

**\$500-\$999**

James Fiume  
Harriet and Joe Foster

**\$100-\$499**

Elizabeth and Howard Ayers  
Bruce E. Barnum  
Barbara Bass  
Louise and Charles Berry  
Jane Block  
Nancy and Patton Breland  
Robin and Richard Brooks  
Irma and Louis Bujnoch  
Jane and Don Burney  
Carolyn and Thomas Caldwell  
Larry Carroll  
Scott Cattanach  
Debra and Stephen Costello  
Susie and Sanford Criner  
Thomas Cuthbert  
Courtney Black Danile and  
Marc Danile  
Francoise and Ed Djerejian  
Barbara and Phil Donovan  
Thomas Downing  
Susan M. Edwards  
Loann and John Eiman  
Diane Lokey Farb  
Ann and J. Kent Friedman  
Mike Grimes  
Amy and Joseph Grinstein  
Susan and Robert Hawkins  
Dorene and Frank Herzog  
Larry Hitt  
Marjorie G. Horning  
Monika Hruby and Denys  
Thorez  
Rick Kammerer and  
Tim Cagle  
Molly and Hugh Kelly  
Ann Kennedy and  
Geoffrey Walker  
Dan A. King  
Jo Ann and Marc Levine  
Dana Levy and Neil Kelly  
Susan and David Lummis  
Evangeline and Peter  
Mackintosh  
Melissa Marschall  
Kay and Clark Martin  
Mollie McBride  
Becky and David McClanahan  
Wendy and Todd McLaughlin  
Carol and Roland Miller  
George Mitchell  
Midori and Akihiro Mochizuki



Hideo Muroi  
 Barbara Murray  
 H. Joe Nelson III  
 Tassie Nicandros  
 Yukihiko and Ako Nose  
 Michol O'Connor  
 Elizabeth and Jim Patterson  
 Charles Perlitz  
 Belle and Peter Petkas  
 Mary Ann H. Phillips  
 Angie Prince and Eric Peden  
 Dean Putterman  
 Marcia and Les Randall  
 David W. Robinson  
 Oscar Rose  
 Geoff Russell  
 Jeri and Marc Shapiro  
 Stuart Shapiro  
 Sharon and Christian Sheridan  
 Atsuko Shimowada and G. Patrick McEnroe  
 William Simmons  
 Ed Smith  
 Jennifer Smith and Peter Ragauss  
 Leigh and Reggie Smith  
 Cheryl Ray and Ruel Smith  
 Anna Steinberger  
 Courtney and Fred Steves  
 William Streng  
 Gabrielle and Heinrich Taegtmeier  
 Nancy and Peter Thompson  
 Nicola and Richard Toubia  
 Lynda and Joe Turner  
 Cynthia Walker  
 Mary Faye and Peter Way  
 Paula O'Neill-Weedon and Waland Weedon  
 Anita and Charles Weiner  
 Becky and Dan Wieder  
 Sheridan and John Eddie Williams  
 Sallie and Bob Wright  
  
**Memorials and Honoraria**  
 In honor of Annie Amante  
 Peggy Amante  
 In memory of Alando Jones Ballantyne  
 Houston Parks Board  
 In memory of Bill Coats

Andrews Myers Coulter & Hayes, PC.  
 Associated Builders & Contractors of Greater Houston  
 Robert C. Bass, Jr.  
 Sadie Gwin Blackburn  
 Susan and Major Bradshaw  
 BRH - Garver Construction, L.P.  
 Marcia Carter  
 Cokinis, Bosien & Young  
 Brenda and James Collura  
 Crescent Real Estate, Greenway Plaza  
 Marilyn and Steve Dishman  
 Ford Nassen & Baldwin  
 Susan and Mike Garver  
 Halls & Evans, LLC  
 Foundation  
 Humphrey Company, Ltd.  
 Jamail & Smith Construction  
 Josephine and Phil John  
 Kaim Family Foundation  
 Ann and Tom Kelsey  
 Sissy and Denny Kemponer III  
 Elizabeth and Albert Kidd  
 Marilyn Klinger  
 Victoria and Marshall Lightman  
 MDC Systems Enterprises, LLC  
 John N. Molbeck, Jr.  
 Barry Moore  
 Marcia Murphey and Doug Koch  
 Kristin and Barry Palmer  
 Macey and Harry Reasoner  
 Rinkmus Consulting Group, Inc.  
 Dorry and Carroll Shaddock  
 Carol and Peter Taaffe  
 Robert Wachsmuth  
 John E. Walsh, Jr.  
 Weinstein Spira &

Company, P.C.  
 Joe F. Wheat  
 Doris A. Williams and Jeff E. Ross  
 Winstead PC  
 Worldwide Court Reporters, Inc.  
 In memory of Jim Elkins  
 Sallie and Bob Wright  
 In honor of Courtney and Rob Ervin  
 Mike Mahlstedt, Martha Turner Properties  
 In memory of Zonia Escobar  
 Kathie and Dennis Long  
 Teresa Mancinas  
 In memory of Charles Grant Floyd  
 Judy G. Viebig  
 In memory of Sally Hoeffcker  
 Mary and Martin Ambrose  
 BP Fabric of America Fund (James Lemaux, Robert S. McDaniel, Pat Miller, Devina Prince, John M. Sprowls, and Philip N. Trumbly)  
 Corita and Ralph DuBose  
 Chris Fair  
 Robert Gomez  
 Larry Hitt  
 George E. Howe  
 Lois Howell  
 Barbara and John Lasley  
 Suzanne Mitchell and Richard Zansitis  
 Linda and Mark Peters  
 Linda and David Renner  
 Patricia Tibbits and Sterling Helwick, Jr.  
 Philip N. Trumbly  
 In honor of Demaris and Hank Hudspeth  
 Helen and Jose Flores  
 In memory of George Lane, Margaret Ellen Smith, and Jack Trotter  
 Sandra L. Sessoms  
 In honor of Sara and John Lindsey

Carolyn and Platt Davis  
 In honor of Jackie and Malcolm Mazow  
 Lauren Mazow Boyle  
 Kay W. Case  
 Dr. and Mrs. Jeffrey Wolens  
 Jill and Jonathan Wolens  
 In memory of Erin Gregory Neale  
 Judy and James Bozeman  
 Terrylin G. Neale  
 The Samuels Foundation  
 In memory of Margaret C. Skidmore  
 Louis H. Skidmore, Jr.  
 In honor of Barbara and Louis Sklar  
 Sue and John Farrell  
 In honor of Ryder and Lyra Swen  
 Pam and Steve Wakefield  
 In Kind  
 A-Rocket Moving & Storage, Inc.  
 Continental Airlines, Inc.  
 C. Daniel Tighe

**George Hermann Society**

Genevieve Lykes Duncan  
 May Shelmire Duncan  
 Steppie and Robert Holsclaw  
 David Langworthy  
 Jackie and Malcom Mazow  
 Terrylin G. Neale  
 Doreen Stoller and Dan Piette  
 John E. Walsh, Jr.

*The George Hermann Society recognizes donors who have provided for the future of Hermann Park through bequests or life income gifts to Hermann Park Conservancy.*  
*The names listed in this annual report include donors who made gifts or pledges of \$100 or more during the fiscal year from July 1, 2009 to June 30, 2010, as well as all George Hermann Society members. In compliance with IRS*



**Statements of Financial Position  
as of June 30, 2010**

**ASSETS**

Cash	\$	993,163
Money market funds		1,836,589
Accounts and government grants receivable		64,828
Pledges receivable		1,648,477
Prepaid expenses and other assets		37,627
Investments		2,650,077
Property, net		1,596,424
<b>TOTAL ASSETS</b>	<b>\$</b>	<b>8,827,185</b>

**LIABILITIES AND NET ASSETS**

Liabilities:		
Accounts payable and accrued expenses	\$	94,132
Construction payable		123,946
Line of credit		2,568,552
Funds held on behalf of City of Houston		688,341
Total liabilities		3,474,971
Commitments		
Net assets:		
Unrestricted		1,849,019
Temporarily restricted		1,329,725
Permanently restricted		2,173,470
Total net assets		5,352,214
<b>TOTAL LIABILITIES AND NET ASSETS</b>	<b>\$</b>	<b>8,827,185</b>

**Statement of Activities for the year  
ended June 30, 2010**

	UNRESTRICTED	TEMPORARILY RESTRICTED	PERMANENTLY RESTRICTED	TOTAL
<b>REVENUE</b>				
Contributions	\$ 204,988	\$ 863,088	\$ 421,747	\$ 1,489,823
Special events	570,628			570,628
Donor benefit costs – special events	(110,097)			(110,097)
Park concessions	903,943			903,943
Investment return	257,956	7,097		265,053
Total revenue	1,827,418	870,185	421,747	3,119,350
Net assets released from restrictions:				
Park projects and programs	973,922	(973,922)		
Total	2,801,340	(103,737)	421,747	3,119,350
<b>EXPENSES</b>				
Program services:				
Planning, design, and construction	485,362			485,362
Visitor services	670,706			670,706
Park program and maintenance	265,697			265,697
Total program services	1,421,765			1,421,765
Management and general	164,823			164,823
Fundraising	239,002			239,002
Total expenses	1,825,590			1,825,590
<b>CHANGES IN NET ASSETS</b>	975,750	(103,737)	421,747	1,293,760
Net assets, beginning of year	873,269	1,433,462	1,751,723	4,058,454
Net assets, end of year	\$ 1,849,019	\$ 1,329,725	\$ 2,173,470	\$ 5,352,214

# BOARD OF DIRECTORS FY2010

## Chair

Thomas Downing

## Executive Committee

Jay Baker  
William M. Coats  
Sanford W. Criner, Jr.  
Danny David  
Steve Dolman  
Ellie Francisco  
Gregg Hollenberg  
Linda C. Hunsaker  
Ann Kennedy  
Margaret L. Kripke, Ph.D.  
Diann L. Lewter  
Terrylin G. Neale  
James L. Robertson  
Cassie B. Stinson  
Phoebe Tudor  
Keith Watson Wade

## Board

Natalye Appel,  
FAIA, LEED AP  
Kathryn Berg  
William G. Bowen, Jr.  
Gracie Cavar  
Milane Duncan-Frantz  
Lainie Gordon  
Jay Hellums  
Leisa Holland-Nelson  
Steppie Holsclaw  
Demetra C. Jones  
Carol Linn  
Marley Lott  
James Lykes  
Kunio Minami  
Jay Moore  
Gary K. Porter  
Chris J. Reichert

Brian Rollins  
Michael E. Rome  
Karen Rozzell  
Donald W. Short  
Marvin Taylor  
Kimberly A. Tutcher  
John E. Walsh, Jr.  
Joe Weikerth  
Sheridan Williams  
L. Burke Windham III  
Herbert Yuan

## Ex-Officio

Joe Turner  
Rick Dewees

## Executive Director

Doreen Stoller

## Advisory Board

Jane Anderson Curtis  
Anna Pearl Barrett  
Sadie Gwin Blackburn  
Jane B. Block  
Allison Bond  
Russell D. Brightwell  
Donna Buja  
John D. Burns  
James Calaway  
H. Mallory Caldwell  
Anne Carl  
Jo A. Casady  
Jackson Chang  
Kara Childress  
Annie Criner  
Davetta Daniels, Ed. D.  
Kim Davis  
June Deadrick  
Scott Dorfman, M.D.  
Michael Easely  
Lana C. Edwards, M.Ed.

Charlene Evans, Ph.D.  
Brent Friedman  
J. Kent Friedman  
Amy Grinstein  
Terri Havens  
Molly Hubbard  
Barbara R. Hurwitz  
Richard F. Kammerer  
Susan Keeton  
Christopher Lykes Knapp  
Shannon Langrand  
Elyse Lanier  
Rashena Lindsay Flagg  
Kathy Lord  
Tommy Lott  
David R. Lummis  
Ted Maa  
Jackie Wolens Mazow  
Anne C. Mendelsohn  
Kenneth A. Moffet  
Tricia Moody  
Vance Muse  
D. Patricia Nelson, Ph.D.  
H. Joe Nelson III  
Warren R. Nicholson  
Kathleen L. O'Reilly, P.G.  
Roz Pactor  
Valerie Palmquist  
Glen Ragland  
David W. Robinson  
DeAndre Sam  
Lonnie Schiller  
Louis S. Sklar  
Ed Smith  
Harry L. Stille  
Timothy A. Surratt  
Tye Taft  
Heath J. Thibodeaux  
Pattie Dale Tye  
Susan Young

# STAFF

## The Conservancy Team

Doreen Stoller  
*Executive Director*  
LaTonya Dilworth  
*Assistant Manager,  
Visitor Services*  
Lynne Donoghue  
*Accounting Manager*  
Kelsey Harrod  
*Development Assistant*  
Barbara Jo Harwell  
*Conservation Director*  
Derrick D. Jackson  
*Maintenance Coordinator*  
Mike Johnson  
*Project Manager*

Diane Kerr  
*Volunteer and Education  
Coordinator*

Meghan Miller  
*Major Gifts Manager*

Eliza Wright  
*Marketing Manager*







**HERMANN PARK  
CONSERVANCY**

6201 -A Hermann Park Drive  
Houston, Texas 77030

713-524-5876 | [www.hermannpark.org](http://www.hermannpark.org)

Non-Profit Org.  
U.S. Postage  
PAID  
Houston, TX  
Permit No. 7445